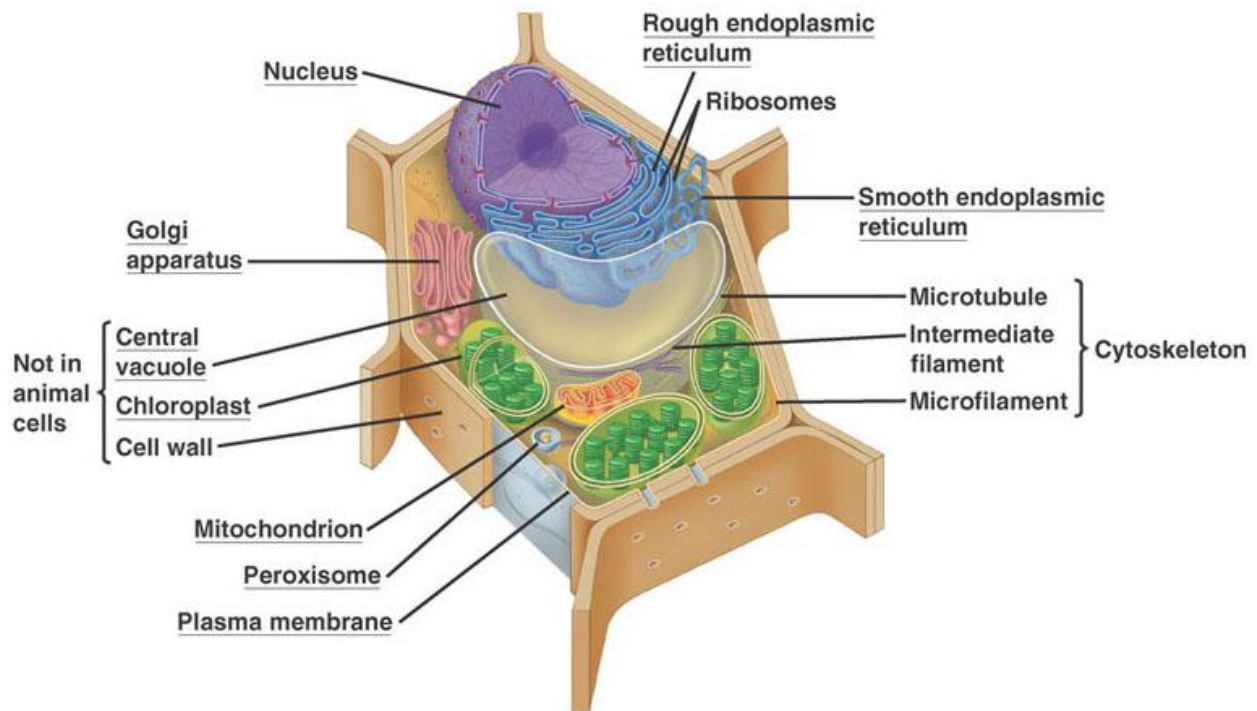


Biology

Plant Cell Handout



Organelles

Nucleus – Holds DNA

- Chromatin – Relaxed DNA
- Nucleolus – Site of Ribosome Production
- Nuclear Pore – Allows for movement of mRNA and Ribosomes out of the nucleus
- Nuclear Membrane – Double membrane surrounding the nucleus

Cytoskeleton – Structure and Transport

- Microtubules, Intermediate Filaments, Microfilaments

Mitochondria – Makes ATP for cell use

Plasma Membrane – Semipermeable membrane that surrounds the entire cell

Rough Endoplasmic Reticulum – Covered in Ribosomes, makes proteins for export

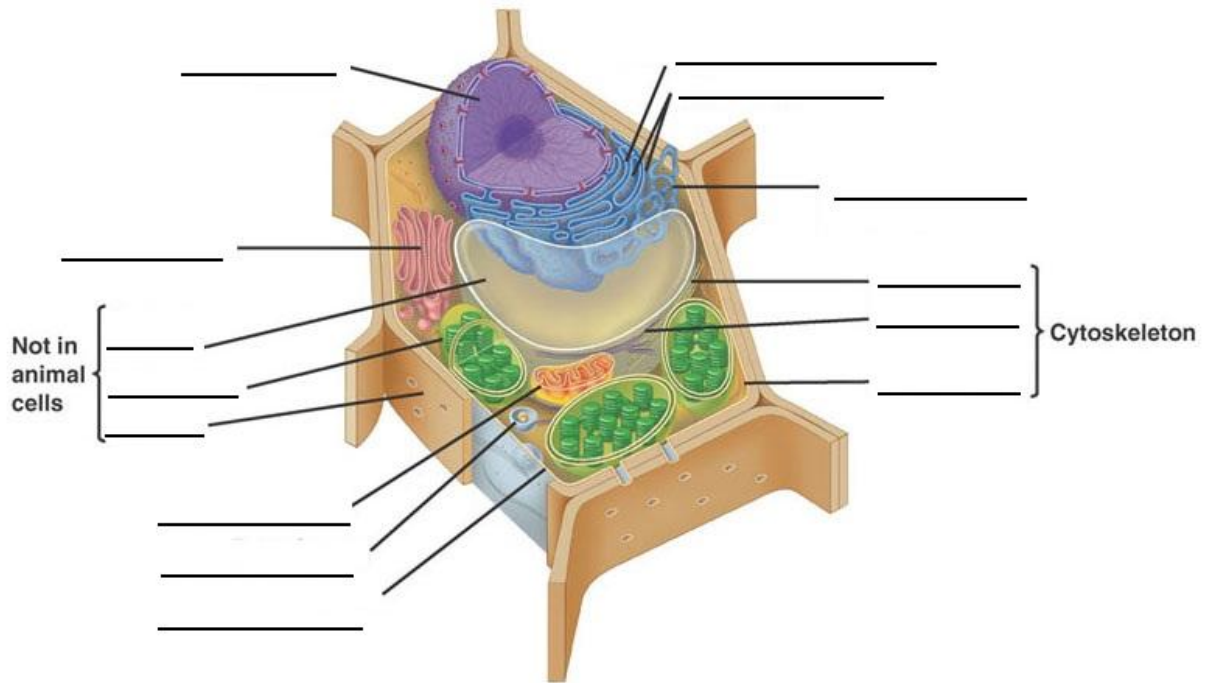
Smooth Endoplasmic Reticulum – No Ribosomes, makes lipids

Golgi Apparatus – Packages and sorts proteins for export

Ribosomes – Read mRNA and make proteins

Not in animal cells – Cell Wall (keeps cell shape), Chloroplasts (photosynthesis), Central Vacuole (Fills with water to create turgor pressure)

Biology



Word Bank

Chromatin
Nucleolus
Nuclear Membrane
Nuclear Pore
Microtubules
Microfilaments
Intermediate Filaments
Mitochondria

Plasma Membrane
Cell Wall
Chloroplast
Rough Endoplasmic Reticulum
Smooth Endoplasmic Reticulum
Golgi Apparatus
Ribosomes
Central Vacuole